

PART OF THE SE.1/4, OF SECTION 21, THE SW.1/4, OF SECTION 22, AND THE  
NE.1/4, OF SECTION 28, T.7N., R.1E., S.L.B. & M.

218

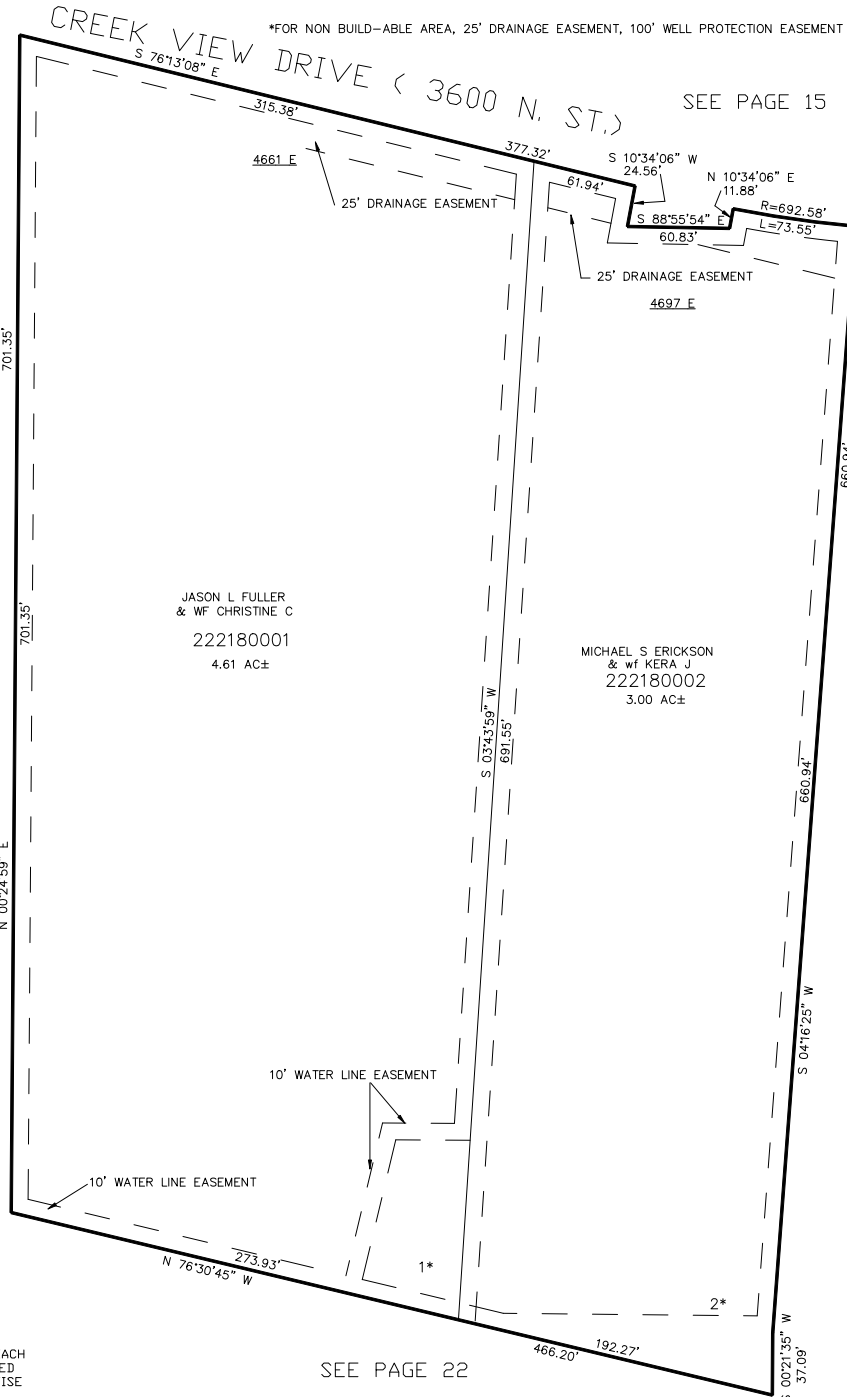
# RASPBERRY HILLS SUBDIVISION

IN WEBER COUNTY

TAXING UNIT: 36

SCALE 1" = 60'

\*FOR NON BUILD-ABLE AREA, 25' DRAINAGE EASEMENT, 100' WELL PROTECTION EASEMENT SEE DED. PLAT



SEE PAGE 15

SEE PAGE 16

SEE PAGE 22

10' UTILITY & DRAINAGE EASEMENTS EACH  
SIDE OF PROPERTY LINES AS INDICATED  
BY DASHED LINES EXCEPT AS OTHERWISE  
SHOWN.

FOR COMPLETE ENG DATA SEE  
ORIGINAL DEDICATION PLAT IN  
BOOK 60, PAGE 55 OF RECORDS.